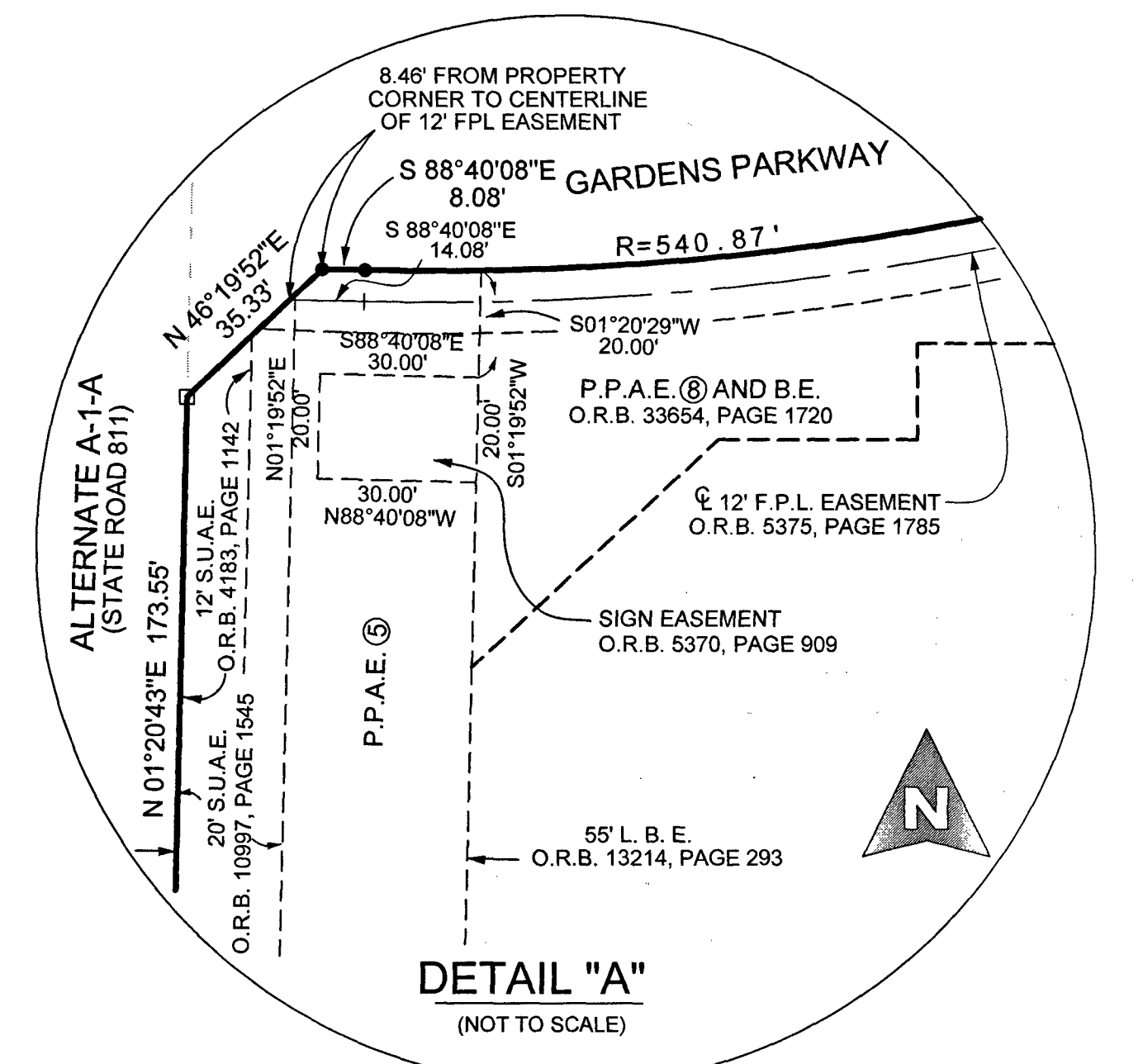
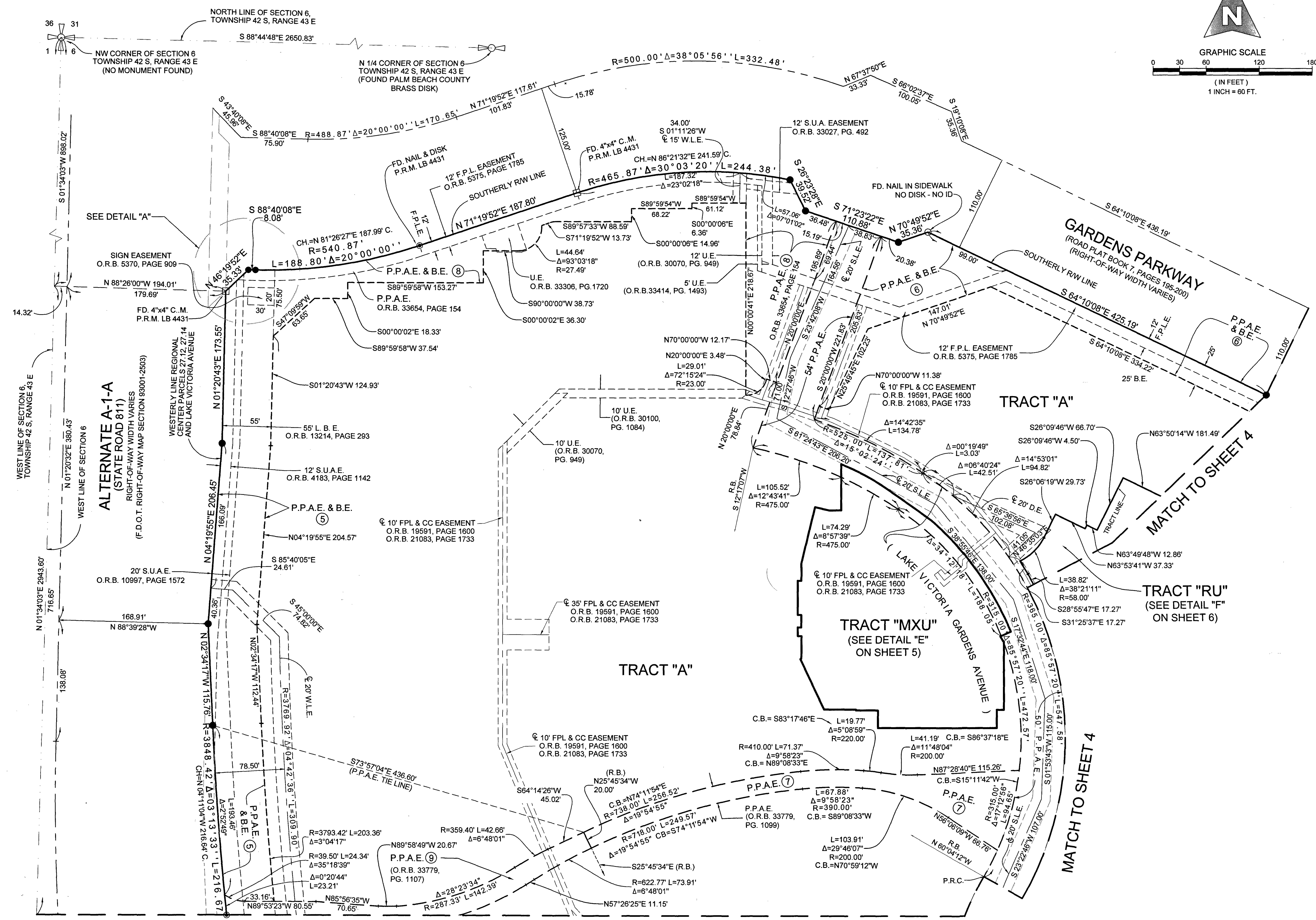
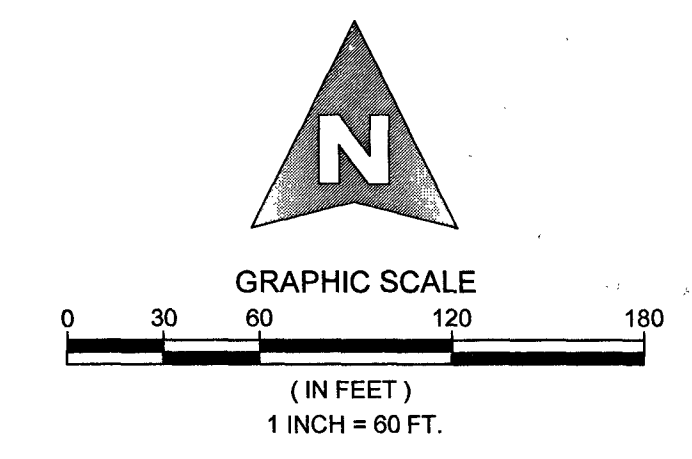
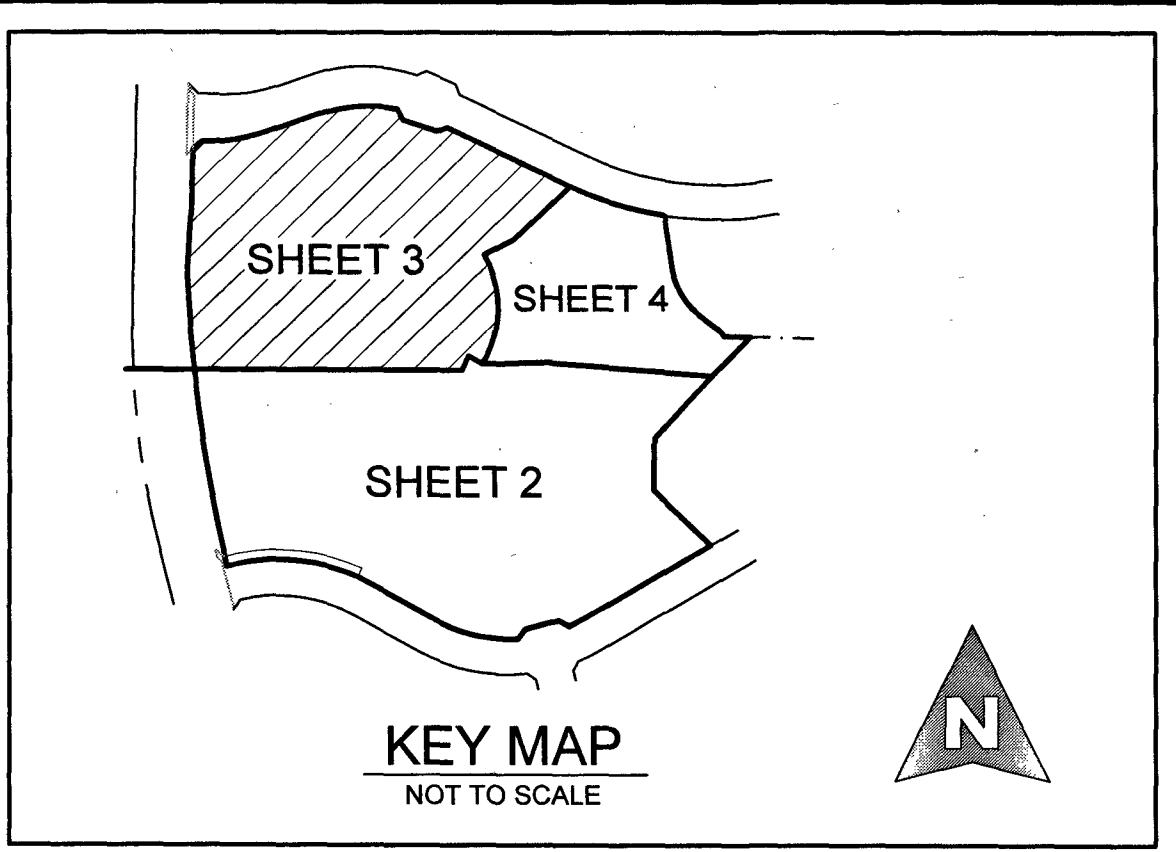


# DOWNTOWN PALM BEACH GARDENS

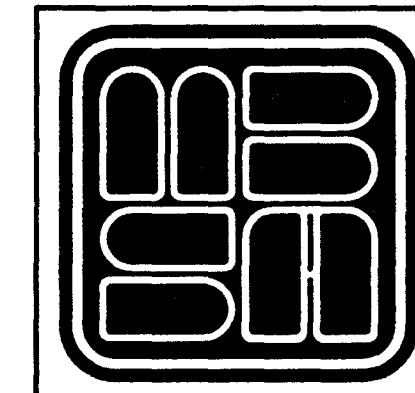
LYING IN SECTION 6, TOWNSHIP 42 SOUTH, RANGE 43 EAST, CITY OF PALM BEACH GARDENS, PALM BEACH COUNTY, FLORIDA, BEING A REPLAT OF ALL OF DOWNTOWN AT THE GARDENS, AS RECORDED IN PLAT BOOK 118, PAGES 130 THROUGH 133, PUBLIC RECORDS OF PALM BEACH COUNTY, FLORIDA.



**(AREA TABULATION ( P.P.A.E. 1-9 )**

①	1A	= 13.75	ACRES
②		= 2.14	ACRES
③		= 1.04	ACRES
④		= 0.33	ACRES
⑤		= 0.90	ACRES
⑥		= 0.49	ACRES
⑦		= 0.33	ACRES
⑧		= 0.86	ACRES
⑨		= 0.27	ACRES
<b>TOTAL</b>		<b>= 20.11</b>	<b>ACRES</b>

(P.P.A.E. ②) = LAKE VICTORIA GARDENS AVE.)



**MICHAEL B. SCHORAH & ASSOCIATES, INC.**  
1850 FOREST HILL BLVD., SUITE 206  
WEST PALM BEACH, FLORIDA 33406  
E#B 2438 TEL. (561) 968-0080 FAX. (561) 642-9726 L#B 2438

**DOWNTOWN PALM BEACH GARDENS**